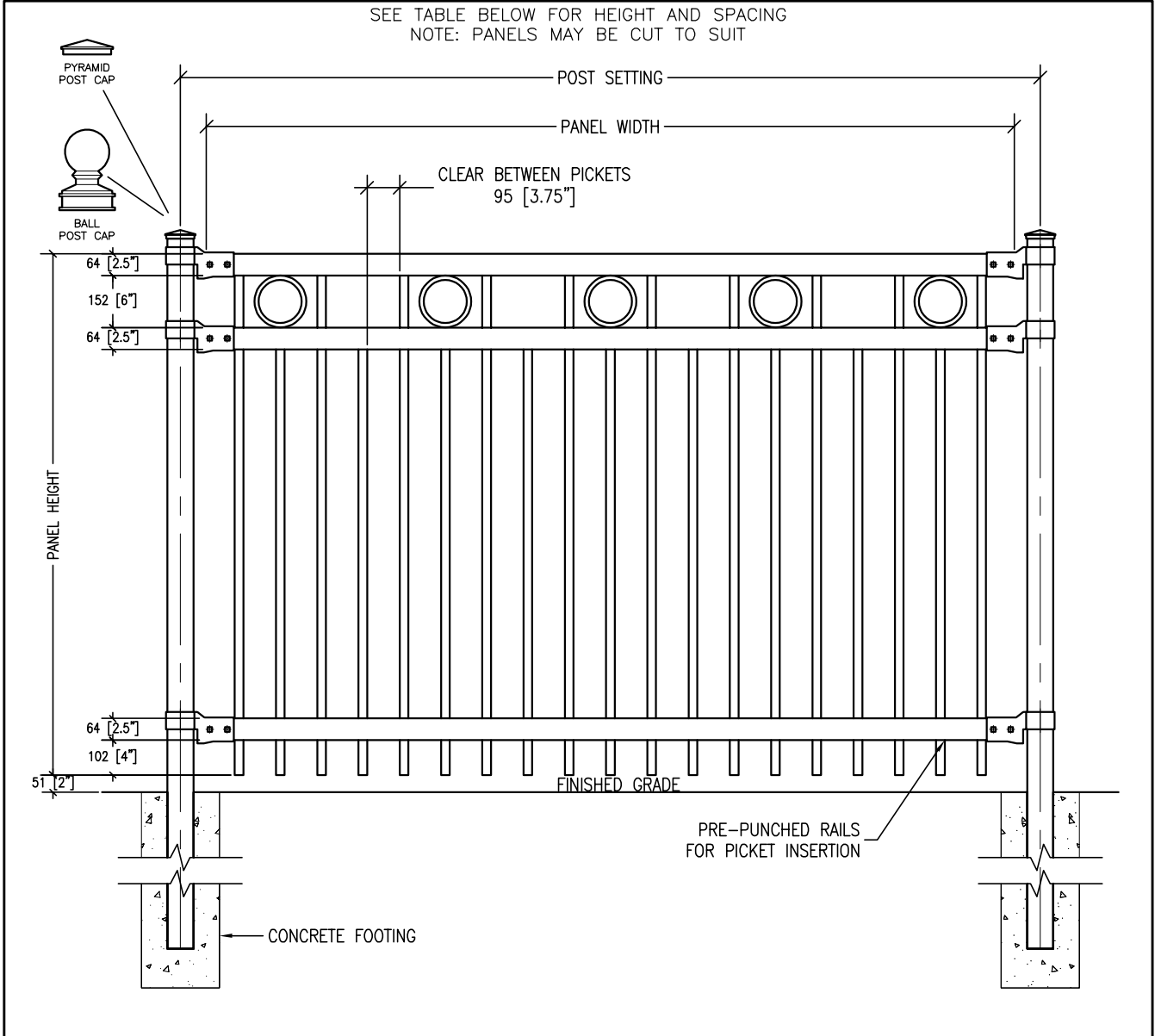


SEE TABLE BELOW FOR HEIGHT AND SPACING  
NOTE: PANELS MAY BE CUT TO SUIT

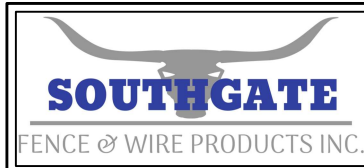


**SPECIFICATIONS**

POSTS: 76mm x 76mm (3" x 3") 14 GAUGE  
 POST FLANGES: 6" x 6" x 1/4"  
 POST CAP: PYRAMID OR BALL  
 RAILS: 38mm x 64mm (1 1/2" x 2 1/2") 16 GAUGE  
 PICKETS: 25mm x 25mm (1" X 1") 16 GAUGE  
 FITTINGS: 12 GAUGE STAMP FORGED, FACTORY FINISHED  
 WELDING: STAINLESS STEEL  
 COLOURS: AVAILABLE IN STANDARD HIGH GLOSS BLACK; OTHER COLOURS AVAILABLE  
 WARRANTY: 5 YEAR MAINTENANCE FREE ON STANDARD POWDER COATING  
 5 YEAR ADDITIONAL WARRANTY ON E-COAT PROTECTION ON REQUEST  
 • ALL COMPONENTS ARE MADE FROM GALVALUME STEEL TUBING AND COATED ELECTROSTATICALLY WITH A THERMALLY BONDED POWDER COATING WITH A MINIMUM FILM THICKNESS OF 2.5 MILS.  
 • ALL BRACKETS, ALUMINUM POST CAPS AND FINIALS ARE E-COATED BEFORE POWDER COATING.

PANEL HEIGHT*	PANEL WIDTH	POST SETTING
<914mm (36")	2362mm (93")	2527mm (99½")
914mm (36")		
1219mm (48")		
1524mm (60")		
1828mm (72")	1867mm (73½")	2032mm (80")
2134mm (84")		
2438mm (96")		
2743mm (108")		
3048mm (120")		
>3048mm (120")		

**SOUTHGATE FENCE AND WIRE PRODUCTS**  
 65 SALTSMAN DRIVE CAMBRIDGE, ONTARIO N3H 4R7  
 (519) 650-7027 www.southgatefence.ca info@southgatefence.ca



STYLE	6538
SERIES	LONGHORN III
REVISION	2026